



RESEARCH FUND

Endowment –
Modus Operandi

Contents

1	About the guide	3
2	Selection criteria for the capital endowment	3
2.1	Geographic scope	3
2.2	Selection criteria	3
3	The funding	4
3.1	Funding budget	4
4	How to apply for an endowment	4
4.1	Selection timetable for 2009	4
4.2	Detailed description of the steps	5
4.2.1	Step 1: Register your institution	5
4.2.2	Step 2: Request an application form	5
4.2.3	Step 3: Apply	5
4.2.4	Step 4: Review of your application	5
4.2.5	Step 5: Communication of results	5

1 About the guide

This guide contains the practical information needed to apply for a capital endowment from the AXA Research Fund (ARF), as well as a general overview of the selection process.

2 Selection criteria for the capital endowment

Only the most renowned research institutions, which meet the highest standards of excellence, may apply for a capital endowment. These institutions must satisfy the stringent selection criteria set forth below (See §2.2).

Every application that is submitted must be complete and must comply with the criteria below in order to be considered by the Fund's Scientific Board.

The Scientific Board oversees the selection process, basing its decisions on the assessments offered by a network of experts whose reputation in their fields is international.

2.1 Geographic scope

Excellent research institutions with an international scope and located in one of the member states of the European Union or one of the countries associated with the EU within the meaning of the FP 7¹ are eligible for an endowment.

2.2 Selection criteria

The criteria used to make the scientific and academic assessment of your application are:

1. The applying institution's reputation for academic excellence (the quality of its research findings to date: number of publications in scientific reviews, number of quotations, etc.)
2. The ambition of the institution's long-term research policy
3. The operational strength and quality of the organization set up to support this policy (includes a realistic and coherent budget)
4. The institution's relationship to the international community (the international impact of the research carried out, the international reputation of its researchers)
5. The quality of the research environment and working conditions offered to researchers
6. Management of the reciprocal interaction between the academic and business worlds

¹ Switzerland, Israel, Norway, Iceland, Liechtenstein, Turkey, Croatia, the Former Yugoslav Republic of Macedonia and Serbia, Albania and Montenegro.
ftp://ftp.cordis.europa.eu/pub/fp7/docs/third_country_agreements_en.pdf

3 The funding

3.1 Funding budget

A budget of 9 million euros will be available in 2009 to finance capital endowments and permanent chairs of up to 3 million euros each.

The disbursement of funds will be discussed during the contracting phase.

4 How to apply for an endowment

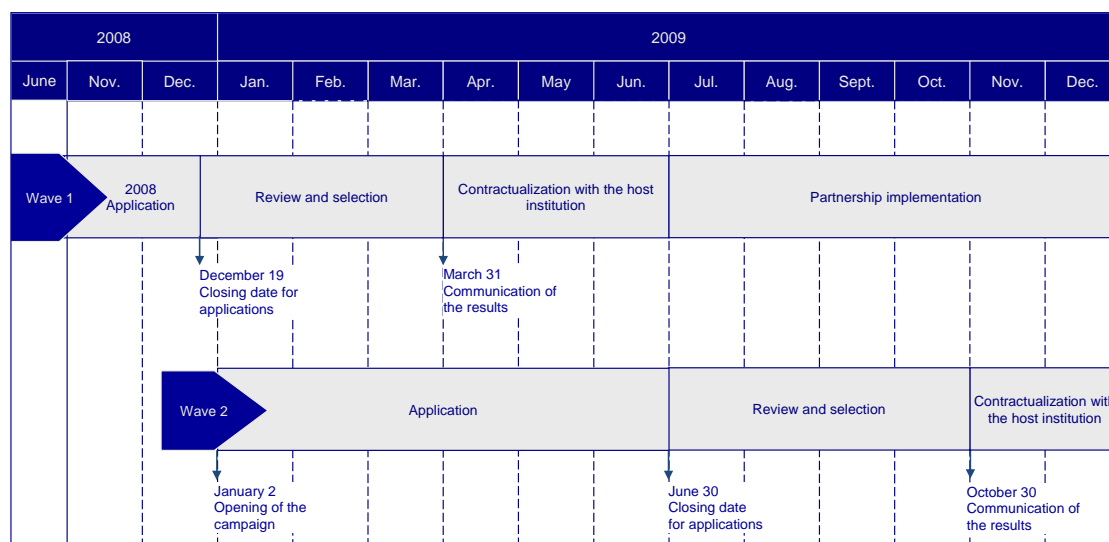
4.1 Selection timetable for 2009

2 campaigns will be launched:

- First campaign closing date: 12/19/2008 (12 am French time)
- Second campaign closing date: 06/30/2009 (12 am French time)

An institution is allowed to submit only one application in 2009 either for endowment or for endowed chair.

We invite the institution to choose the campaign that suits best its development plan.



4.2 Detailed description of the steps

4.2.1 Step 1: Register your institution

Institutions are referenced prior to the selection process. Referencing is explained in detail on the Fund's website (<http://researchfund.axa.com/>).

4.2.2 Step 2: Request an application form

Only referenced institutions (See 4.2.1) may apply for a capital endowment. Have your operational contact person request an application file from the AXA Research Fund by email: endowments@axa.com

4.2.3 Step 3: Apply

The application file will be sent by email to the institution.

The institution's operational contact person will be responsible to ensuring that the duly completed application is submitted within the stated deadline (See §4.1) to the following email address: endowments@axa.com

IMPORTANT INFORMATION

Applications filed after the stated deadline will be considered ineligible.

4.2.4 Step 4: Review of your application

The Scientific Board will review each application after consultation, where relevant, of the world-renowned experts in the appropriate area.

4.2.5 Step 5: Communication of results

As soon as the Board has made its decision, the Fund will inform the institution's legal representative and operational contact.